

# Official Primary Ballot

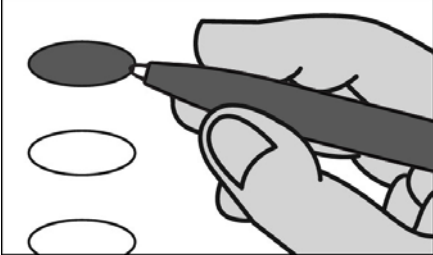
## Nonpartisan Office

### February 18, 2025

S13

**Notice to Voters:** If you are voting on Election Day, your ballot must be initialed by two (2) election inspectors. If you are voting absentee, your ballot must be initialed by the municipal clerk or deputy clerk. Your ballot may not be counted without initials (see end of ballot for initials).

#### General Instructions



If you make a mistake on your ballot or have a question, ask an election inspector for help (absentee voters: contact your municipal clerk).

To vote for a name on the ballot, fill in the oval next to the name like this: ●

To vote for a name that is not on the ballot, write the name on the line marked "write-in" and fill in the oval next to the name like this: ●

#### State Superintendent of Public Instruction

#### State Superintendent Vote for 1

- Jeff Wright
- Brittany Kinser
- Jill Underly
- write-in

Official Primary Ballot  
Nonpartisan Office  
February 18, 2025

for

## Town of Milton

**Ballot issued by**

\_\_\_\_\_

\_\_\_\_\_

Initials of election inspectors

**Absentee ballot issued by**

\_\_\_\_\_

Initials of Municipal Clerk or Deputy Clerk

\_\_\_\_\_

If issued by SVDs, both must initial.

**Certification of Voter Assistance**

I certify that I marked or read aloud this ballot at the request and direction of a voter who is authorized under Wis. Stat. §6.82 to receive assistance.

\_\_\_\_\_

Signature of assistor

#### For Official Use Only

**Inspectors:** Identify ballots required to be remade:

- Overvoted
- Damaged
- Other

If this is the <b>Original Ballot</b> , write the serial number here: _____	If this is the <b>Duplicate Ballot</b> , write the serial number here: _____
--	---

\_\_\_\_\_

Initials of inspectors who remade ballot