

Official Primary Ballot

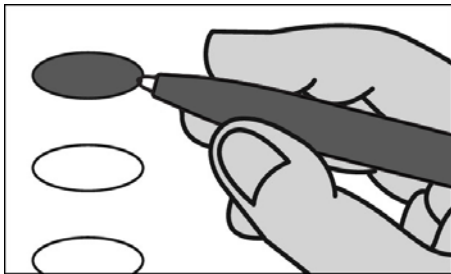
Partisan Office

August 11, 2020

S10

Notice to Voters: If you are voting on Election Day, your ballot must be initialed by two (2) election inspectors. If you are voting absentee, your ballot must be initialed by the municipal clerk or deputy clerk. Your ballot may not be counted without initials. (See end of ballot for initials.)

General Instructions



If you make a mistake on your ballot or have a question, ask a poll worker for help. (Absentee voters: Contact your municipal clerk.)

To vote for a name on the ballot, fill in the oval next to the name like this: ●.

To vote for a name that is not on the ballot, write the name on the line marked "write-in," and fill in the oval next to the name like this: ●.

Special Instructions for Voting in a Partisan Primary

In the Partisan Primary:

- You may vote in only ONE party's primary.
- If you choose a party, votes cast in that party will be counted. Votes cast in any other party will not be counted.
- If you do not choose a party, and you vote in more than one party, no votes will be counted.

You must vote for individual candidates.

Party Preference Section

Choose a party in which to vote.

Fill in the oval next to your party choice, like this: ●. **Choose only ONE.**

- Democratic
- Republican
- Constitution

Democratic Party Primary

If you vote in this party's primary, you may not vote in any other party's primary.

Congressional

**Representative in Congress
District 1
Vote for 1**

- Josh Pade
- Roger Polack
- write-in

Legislative and State

**Representative to the Assembly
District 43
Vote for 1**

- Don Vruwink
- write-in

**District Attorney
Vote for 1**

- David J. O'Leary
- write-in

County

**County Clerk
Vote for 1**

- Yuri Rashkin
- Lisa Tollefson
- write-in

**County Treasurer
Vote for 1**

- Michelle L. Roettger
- write-in

**Register of Deeds
Vote for 1**

- Sandy Disrud
- write-in

End Democratic Party Primary

Republican Party Primary

If you vote in this party's primary, you may not vote in any other party's primary.

Congressional

**Representative in Congress
District 1
Vote for 1**

- Bryan Steil
- write-in

Legislative and State

**Representative to the Assembly
District 43
Vote for 1**

- Beth Drew
- write-in

**District Attorney
Vote for 1**

- write-in

County

**County Clerk
Vote for 1**

- write-in

**County Treasurer
Vote for 1**

- write-in

**Register of Deeds
Vote for 1**

- write-in

End Republican Party Primary

Democratic Primary begins at top of next column.

Republican Primary begins at top of next column.

Constitution Primary begins on the other side of ballot.

SAMPLE

Constitution Party Primary

If you vote in this party's primary, you may not vote in any other party's primary.

Congressional

**Representative in Congress
District 1
Vote for 1**

write-in

Legislative and State

**Representative to the Assembly
District 43
Vote for 1**

write-in

**District Attorney
Vote for 1**

write-in

County

**County Clerk
Vote for 1**

write-in

**County Treasurer
Vote for 1**

write-in

**Register of Deeds
Vote for 1**

write-in

 **End Constitution Party Primary**

SAMPLE

**Official Primary Ballot
Partisan Office**

August 11, 2020

for

- T. Janesville W7-9
- T. Lima
- T. Milton W1
- T. Rock 5&7
- C. Janesville W31
- C. Milton W1-12

Ballot issued by

Initials of election inspectors

Absentee ballot issued by

Initials of municipal clerk or deputy clerk

If issued by SVDs, both SVDs must initial.

Certification of Voter Assistance

I certify that I marked or read aloud this ballot at the request and direction of a voter who is authorized under Wis. Stat. § 6.82 to receive assistance.

Signature of assistor

For Official Use Only

Inspectors: Identify ballots required to be remade.

Reason for remaking ballot:

- Overvoted
- Damaged
- Other

If this is the **Original Ballot**, write serial number here:

If this is the **Duplicate Ballot**, write serial number here:

Initials of inspectors who remade ballot

