

Official Ballot

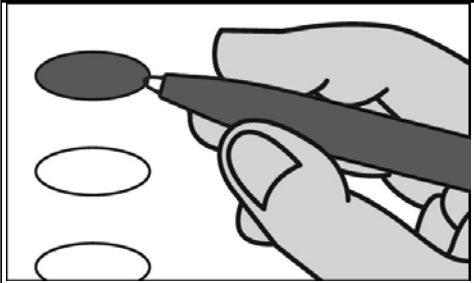
Nonpartisan Office

April 2, 2019

S32

Notice to voters: If you are voting on Election Day, your ballot must be initialed by two election inspectors. If you are voting absentee, your ballot must be initialed by the municipal clerk or deputy clerk. Your ballot may not be counted without initials. (See right column of ballot for initials.)

General Instructions



If you make a mistake on your ballot or have a question, ask an election inspector for help. (Absentee voters: Contact your municipal clerk.)

To vote for a name on the ballot, fill in the oval next to the name like this: ●

To vote for a name that is not on the ballot, write the name on the line marked "write-in" and fill in the oval next to the name like this: ●

Municipal (Cont.)

Town Board Supervisor
Vote for not more than &

Jon Jennings

John Traynor

write-in:

write-in:

School District

School District of Edgerton
School Board Member
Vote for not more than 3

Matt Towns

James S. Raymond

Kathy Klein

write-in:

write-in:

write-in:

Judicial

Justice of the Supreme Court
Vote for 1

Brian Hagedorn

Lisa Neubauer

write-in:

Court of Appeals Judge, District 4
Vote for 1

Jennifer Nashold

write-in:

Circuit Court Judge, Branch 1
Vote for 1

Karl Hanson

write-in:

Circuit Court Judge, Branch 2
Vote for 1

Derrick A. Grubb

write-in:

Circuit Court Judge, Branch 4
Vote for 1

Daniel T. Dillon

write-in:

Multi-Jurisdictional Judge

Municipal Judge for the Towns of Milton, Harmony and Lima
Vote for 1

Mark A. Schulz

write-in:

Municipal

Town Board Chairperson
Vote for 1

Bryan Meyer

write-in:

Continue voting at top of next column.

Official Ballot

Nonpartisan Office

April 2, 2019

for

T. Milton W3 Edgerton SD

Ballot Issued by

Initials of election inspectors

Absentee ballot issued by

Initials of municipal clerk or deputy clerk

If issued by SVDs, both SVDs must initial.

Certification of Voter Assistance

I certify that I marked or read aloud this ballot at the request and direction of a voter who is authorized under Wis. Stat. § 6.82 to receive assistance.

Signature of assistor

For Official Use Only

Inspectors: Identify ballots required to be remade.

Reason for remaking ballot:

Overvoted

Damaged

Other

Original Ballot No. or Duplicate Ballot No.

Initials of inspectors who remade ballot