

Official Ballot

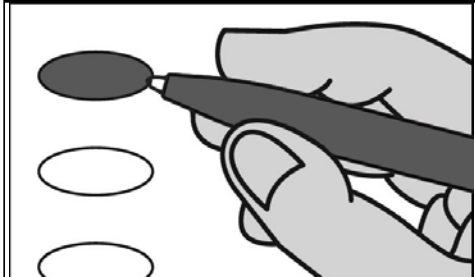
Nonpartisan Office and Referendum

April 2, 2019

S31

Notice to voters: If you are voting on Election Day, your ballot must be initialed by two election inspectors. If you are voting absentee, your ballot must be initialed by the municipal clerk or deputy clerk. Your ballot may not be counted without initials. (See right column of ballot for initials.)

General Instructions



If you make a mistake on your ballot or have a question, ask an election inspector for help. (Absentee voters: Contact your municipal clerk.)

To vote for a name on the ballot, fill in the oval next to the name like this: ●

To vote for a name that is not on the ballot, write the name on the line marked "write-in" and fill in the oval next to the name like this: ●

Judicial

Justice of the Supreme Court Vote for 1

- Brian Hagedorn
- Lisa Neubauer
- write-in:

Court of Appeals Judge, District 4 Vote for 1

- Jennifer Nashold
- write-in:

Circuit Court Judge, Branch 1 Vote for 1

- Karl Hanson
- write-in:

Circuit Court Judge, Branch 2 Vote for 1

- Derrick A. Grubb
- write-in:

Circuit Court Judge, Branch 4 Vote for 1

- Daniel T. Dillon
- write-in:

Multi-Jurisdictional Judge

Municipal Judge for the Towns of Milton, Harmony and Lima Vote for 1

- Mark A. Schulz
- write-in:

Municipal

Town Board Chairperson Vote for 1

- Bryan Meyer
- write-in:

Continue voting at top of next column.

Municipal (Cont.)

Town Board Supervisor Vote for not more than &

- Jon Jennings
- John Traynor
- write-in:
- write-in:

School District

School District of Milton School Board Member Vote for not more than 2

- Rick Mullen
- Harvey Smith
- Michael S. Pierce
- Rick Ehle
- write-in:
- write-in:

Referendum

To vote in favor of the question, fill in the oval next to "Yes", like this: ●

To vote against the question, fill in the oval next to "No", like this: ●

School District of Milton

Question: Shall the School District of Milton, Rock and Jefferson Counties, Wisconsin be authorized to issue pursuant to Chapter 67 of the Wisconsin Statutes, general obligation bonds in an amount not to exceed \$59,900,000 for the public purpose of paying the cost of a District-wide school building and improvement program consisting of: construction of academic additions and renovations at all existing elementary schools and at the existing middle school; construction of additions, including a new STEM wing, a new swimming pool and gymnasium space, and renovations at the existing high school; District-wide capital maintenance, safety and ADA accessibility improvements; and acquisition of related furnishings, fixtures and equipment?

- Yes
- No

Official Ballot

**Nonpartisan Office
and Referendum**
April 2, 2019
for
T. Milton W1,2&4 Milton SD

Ballot Issued by

Initials of election inspectors

Absentee ballot issued by

Initials of municipal clerk or deputy clerk
If issued by SVDs, both SVDs must initial.

Certification of Voter Assistance
I certify that I marked or read aloud this ballot at the request and direction of a voter who is authorized under Wis. Stat. § 6.82 to receive assistance.

Signature of assistor

For Official Use Only

Inspectors: Identify ballots required to be remade.

Reason for remaking ballot:
 Overvoted
 Damaged
 Other

Original Ballot No. or Duplicate Ballot No.

Initials of inspectors who remade ballot