

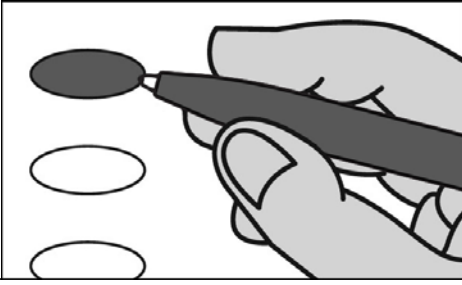
Official Primary Ballot

Partisan Office

August 14, 2018

Notice to voters: If you are voting on Election Day, your ballot must be initialed by two election inspectors. If you are voting absentee, your ballot must be initialed by the municipal clerk or deputy clerk. Your ballot may not be counted without initials. (See end of ballot for initials.)

General Instructions



If you make a mistake on your ballot or have a question, ask an election inspector for help. (Absentee voters: Contact your municipal clerk.)

To vote for a name on the ballot, fill in the oval next to the name like this: ●

To vote for a name that is not on the ballot, write the name on the line marked "write-in" and fill in the oval next to the name like this: ●

Special Instructions for Voting in a Partisan Primary

In the Partisan Primary:

- You may vote in only **ONE** party's primary.
- If you choose a party, votes cast in that party will be counted. Votes cast in any other party will not be counted.
- If you do not choose a party, and you vote in more than one party, no votes will be counted.

You must vote for individual candidates.

Choose a Party Primary

Fill in the oval next to your party choice, like this: ●

Choose only **ONE**.

- Republican
- Democratic
- Libertarian
- Wisconsin Green
- Constitution

Republican Party Primary

If you vote in this party's primary, you may not vote in any other party's primary.

Statewide

Governor Vote for 1

- Scott Walker
- Robert Meyer
- write-in:

Lieutenant Governor Vote for 1

- Rebecca Kleefisch
- write-in:

Attorney General Vote for 1

- Brad Schimel
- write-in:

Secretary of State Vote for 1

- Jay Schroeder
- Spencer Zimmerman
- write-in:

State Treasurer Vote for 1

- Travis Hartwig
- Jill Millies
- write-in:

Congressional

United States Senator Vote for 1

- George C. Lucia
- Leah Vukmir
- Griffin Jones
- Kevin Nicholson
- Charles Barman
- write-in:

Representative in Congress District 1 Vote for 1

- Jeremy Ryan
- Paul Nehlen
- Kevin Adam Steen
- Brad Boivin
- Bryan Steil
- Nick Polce
- write-in:

Legislative and State

State Senator District 15 Vote for 1

- write-in:

Representative to the Assembly District 43 Vote for 1

- Gabriel Szerlong
- write-in:

County

Sheriff Vote for 1

- Jude G. Maurer
- write-in:

Clerk of Circuit Court Vote for 1

- write-in:

End Republican Party Primary

Democratic Party Primary

If you vote in this party's primary, you may not vote in any other party's primary.

Statewide

Governor Vote for 1

- Andy Gronik
- Matt Flynn
- Tony Evers

Lieutenant Governor Vote for 1

- Josh Pade
- Mike McCabe
- Mahlon Mitchell
- Kelda Helen Roys
- Paul R. Soglin

Attorney General Vote for 1

- Kathleen Vinehout
- Dana Wachs
- write-in:

Lieutenant Governor Vote for 1

- Kurt J. Kober
- Mandela Barnes
- write-in:

Attorney General Vote for 1

- Josh Kaul
- write-in:

Secretary of State Vote for 1

- Doug La Follette
- Arvina Martin
- write-in:

State Treasurer Vote for 1

- Dawn Marie Sass
- Cynthia Kaump
- Sarah Godlewski
- write-in:

Congressional

United States Senator Vote for 1

- Tammy Baldwin
- write-in:

Representative in Congress District 1 Vote for 1

- Randy Bryce
- Cathy Myers
- write-in:

Legislative and State

State Senator District 15 Vote for 1

- Janis Ringhand
- write-in:

Representative to the Assembly District 43 Vote for 1

- Don Vruwink
- write-in:

County

Sheriff Vote for 1

- Gary L. Groelle
- Troy Knudson
- write-in:

Clerk of Circuit Court Vote for 1

- Peter D. Severson
- Susan Enloe
- Jacki Gackstatter
- write-in:

End Democratic Party Primary

SAMPLE

Libertarian Party Primary

If you vote in this party's primary, you may not vote in any other party's primary.

Statewide

**Governor
Vote for 1**
 Phillip Anderson
 write-in:

**Lieutenant Governor
Vote for 1**
 Patrick Baird
 write-in:

**Attorney General
Vote for 1**
 write-in:

**Secretary of State
Vote for 1**
 write-in:

**State Treasurer
Vote for 1**
 write-in:

Congressional

**United States Senator
Vote for 1**
 write-in:

**Representative in Congress
District 1
Vote for 1**
 write-in:

Legislative and State

**State Senator
District 15
Vote for 1**
 write-in:

**Representative to the Assembly
District 43
Vote for 1**
 write-in:

County

**Sheriff
Vote for 1**
 write-in:

**Clerk of Circuit Court
Vote for 1**
 write-in:

End Libertarian Party Primary

Wisconsin Green Party Primary

If you vote in this party's primary, you may not vote in any other party's primary.

Statewide

**Governor
Vote for 1**
 Michael J. White
 write-in:

**Lieutenant Governor
Vote for 1**
 Tiffany Anderson
 write-in:

**Attorney General
Vote for 1**
 write-in:

**Secretary of State
Vote for 1**
 write-in:

**State Treasurer
Vote for 1**
 write-in:

Congressional

**United States Senator
Vote for 1**
 write-in:

**Representative in Congress
District 1
Vote for 1**
 write-in:

Legislative and State

**State Senator
District 15
Vote for 1**
 write-in:

**Representative to the Assembly
District 43
Vote for 1**
 write-in:

County

**Sheriff
Vote for 1**
 write-in:

**Clerk of Circuit Court
Vote for 1**
 write-in:

End Wisconsin Green Party Primary

Constitution Party Primary

If you vote in this party's primary, you may not vote in any other party's primary.

Statewide

**Governor
Vote for 1**
 write-in:

**Lieutenant Governor
Vote for 1**
 write-in:

**Attorney General
Vote for 1**
 Terry Larson
 write-in:

**Secretary of State
Vote for 1**
 write-in:

**State Treasurer
Vote for 1**
 Andrew Zuelke
 write-in:

Congressional

**United States Senator
Vote for 1**
 write-in:

**Representative in Congress
District 1
Vote for 1**
 write-in:

Legislative and State

**State Senator
District 15
Vote for 1**
 write-in:

**Representative to the Assembly
District 43
Vote for 1**
 write-in:

County

**Sheriff
Vote for 1**
 write-in:

**Clerk of Circuit Court
Vote for 1**
 write-in:

End Constitution Party Primary

Official Primary Ballot

Partisan Office
August 14, 2018
for

Town of Janesville W7-9
Town of Lima
Town of Milton W1
Town of Rock W 5 & 7
City of Janesville W31
City of Milton

Certification of Voter Assistance

I certify that I marked or read aloud this ballot at the request and direction of a voter who is authorized under Wis. Stat. § 6.82 to receive assistance.

Signature of assistor

For Official Use Only

Inspectors: Identify ballots required to be remade.

Reason for remaking ballot:

- Overvoted
- Damaged
- Other

Original Ballot No. or Duplicate Ballot No.

Initials of inspectors who remade ballot

Ballot issued by

Initials of election inspectors

Absentee ballot issued by

Initials of Municipal Clerk or Deputy Clerk

If issued by SVDs, both SVDs must initial.

SAMPLE