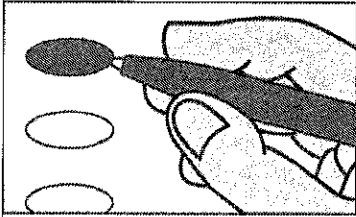


Official Ballot
Nonpartisan Office
April 4, 2017

S31

Notice to voters: If you are voting on Election Day, your ballot must be initialed by two election inspectors. If you are voting absentee, your ballot must be initialed by the municipal clerk or deputy clerk. Your ballot may not be counted without initials. (See end of ballot for initials.)

General Instructions



If you make a mistake on your ballot or have a question, ask an election inspector for help. (Absentee voters: Contact your municipal clerk.)

To vote for a name that is not on the ballot, write the name on the line marked "write-in" and fill in the oval next to the name like this: ●

State Superintendent of Public Instruction

State Superintendent
Vote for 1

- Tony Evers
- Lowell E. Holtz
- write-in:

Judicial

Justice of the Supreme Court
Vote for 1

- Annette Ziegler
- write-in:

Court of Appeals Judge, District 4
Vote for 1

- Michael R. Fitzpatrick
- write-in:

Circuit Court Judge, Branch 6
Vote for 1

- John M. Wood
- write-in:

Multi-Jurisdictional Judge

Municipal Judge for Town of Milton, Town of Harmony and Town of Lima
Vote for 1

- Linda Meyer
- Karl R. Hanson
- write-in:

Municipal

Town Board Chairperson
Town of Milton
Vote for 1

- Bryan Meyer
- write-in:

Town Board Supervisor
Town of Milton
Vote for no more than 2

- Jon Jennings
- John Traynor
- write-in:
- write-in:

School District

School District of Milton
School Board Member
Vote for no more than 3

- Tom Westrick
- Karen Hall
- Jon Cruzan
- Brian Kvapil
- write-in:
- write-in:
- write-in:



**Official Ballot
Nonpartisan Office
April 4, 2017
for**

T. Milton Milton 3612

Ballot issued by

Initials of election inspectors

Absentee ballot issued by

Initials of municipal clerk or deputy clerk
(If issued by SVDs, both SVDs must
initial.)

Certification of Voter Assistance

I certify that I marked or read aloud
this ballot at the request and direction
of a voter who is authorized under
Wis. Stat. s. 6.82 to receive
assistance.

Signature of assistor

For Official Use Only

Inspectors: *Identify ballots required to be
remade.*

Reason for remaking ballot:

- Overvoted
- Damaged
- Other

Original Ballot No. or Duplicate Ballot No.

Initials of inspectors who remade ballot

