

# Official Ballot

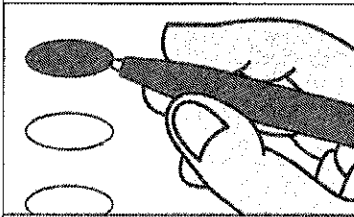
## Nonpartisan Office

### April 4, 2017

S32

**Notice to voters:** If you are voting on Election Day, your ballot must be initialed by two election inspectors. If you are voting absentee, your ballot must be initialed by the municipal clerk or deputy clerk. Your ballot may not be counted without initials. (See end of ballot for initials.)

#### General Instructions



If you make a mistake on your ballot or have a question, ask an election inspector for help. (Absentee voters: Contact your municipal clerk.)

To vote for a name that is not on the ballot, write the name on the line marked "write-in" and fill in the oval next to the name like this: ●

#### State Superintendent of Public Instruction

**State Superintendent**  
Vote for 1

- Tony Evers
- Lowell E. Holtz
- write-in:

#### Judicial

**Justice of the Supreme Court**  
Vote for 1

- Annette Ziegler
- write-in:

**Court of Appeals Judge, District 4**  
Vote for 1

- Michael R. Fitzpatrick
- write-in:

**Circuit Court Judge, Branch 6**  
Vote for 1

- John M. Wood
- write-in:

#### Multi-Jurisdictional Judge

**Municipal Judge for Town of Milton, Town of Harmony and Town of Lima**  
Vote for 1

- Linda Meyer
- Karl R. Hanson
- write-in:

#### Municipal

**Town Board Chairperson**  
**Town of Milton**  
Vote for 1

- Bryan Meyer
- write-in:

**Town Board Supervisor**  
**Town of Milton**  
Vote for no more than 2

- Jon Jennings
- John Traynor
- write-in:
- write-in:

#### School District

**Edgerton School District**  
**School Board Member**  
Vote for no more than 4

- Jordan Wileman
- Amy Horn-Delzer
- Jon Raymond
- Sue Tronnes
- write-in:
- write-in:
- write-in:
- write-in:



**Official Ballot  
Nonpartisan Office  
April 4, 2017  
for**

T. Milton Edgerton 1568

**Ballot issued by**

\_\_\_\_\_  
\_\_\_\_\_

Initials of election inspectors

**Absentee ballot issued by**

\_\_\_\_\_  
\_\_\_\_\_

Initials of municipal clerk or deputy clerk  
(If issued by SVDs, both SVDs must  
initial.)

**Certification of Voter Assistance**

I certify that I marked or read aloud  
this ballot at the request and direction  
of a voter who is authorized under  
Wis. Stat. s. 6.82 to receive  
assistance.

\_\_\_\_\_  
Signature of assistor

**For Official Use Only**

**Inspectors:** Identify ballots required to be  
remade.

**Reason for remaking ballot:**

- Overvoted
- Damaged
- Other

*Original Ballot No. or Duplicate Ballot No.*

\_\_\_\_\_  
\_\_\_\_\_

Initials of inspectors who remade ballot

